



INSTRUCTIONS FOR USE

Pixyl.Neuro Release 1.6.3 via Pixyl's Integration Tool

Version 3.1

November 9th, 2020



Instructions for Use - End user	v3.1
Product Name: Pixyl.Neuro	09-November-2020



Pixyl.Neuro
Release 1.6.3
Manufactured in 2020
Copyright 2020

Manufactured by:



Pixyl,
5 Avenue du Grand Sablon,
38700 La Tronche,
France

Manufacture Date:



2020



0197



Consult user instructions
manual



Caution



Federal law restricts this device to sale (or
use) on the order of a licensed
practitioner.

Additional Information

List key components
Pixyl.Neuro

Version Numbers
1.6.3

Contents

Device Description	3
Intended Use	3
Contraindications	4
Device Classification	4
Technical requirements	4
Privacy Statement	5
Getting Started	6
Before beginning	6
How to register for a Pixyl.Neuro Account	6
Using Pixyl analysis	6
Available analysis	6
Results	7
Interpreting the Analysis Reports	8
Common Report Sections	8
Multiple Sclerosis Report	9
White Matter Hyperintensities Report	11
Brain Volumetry Report	12
Interpreting the segmented DICOM image	13
Further Help	13

1. Device Description

Pixyl.Neuro is a web-based image analysis product that takes medical images of the brain from a magnetic resonance imaging machine (scanner) for analysis. Images in DICOM format are exported from the scanner and uploaded via the internet to the Pixyl.Neuro product. The user can view and download a report giving details of identified brain regions and lesions.

1.1. Intended Use

Intended Use	Pixyl.Neuro is intended for the automatic labelling, visualization and volumetric quantification of segmentable brain regions and lesions from a set of MRI images.
Intended Users	Medical Practitioners.
Intended Use location	In the healthcare facility.
Medical purpose	To support decision making when making a diagnosis or treatment planning in a subject with a neurological disorder. The application has been evaluated on data of patients with multiple sclerosis, white matter lesions, neuro degenerative disorders as well as age-normal subjects.
Multiple Use	As a software product this device can be used multiple times.
Patient population	Persons in the age range 18-90 years.
Part of Body	For use on the brain only.
Operator profile	Users responsible for supplying the input images to the application will be trained technologists working with medical images. The end user interpreting the report output by the application will be a certified medical practitioner with neuroanatomical experience and a full knowledge of the status of the patient being treated.
Application	To be used in the radiology or neurology clinic only when supported by other clinical information about the patient. The application will be used when an MRI scan is considered important to support patient planning and a quantitative report can aid decision making. The said MRI scans have been collected to a sufficient quality.

1.2. Contraindications



Automatic image-based measurements will not be accurate if the underlying image quality is not of a sufficiently high standard. This may be due to effects such as patient motion or gross underlying structural abnormalities or due to the way the images have been collected (inappropriate scanner settings). In addition, the underlying pathologies of the patient can also have a significant impact on the accuracy of the results obtained by the measurements.

This user manual provides guidance on image acquisition parameters, the accuracy of measurements made on images not conforming to this standard cannot be guaranteed.

The user is asked to review all reports thoroughly prior to making any decisions on patient treatment. Guidance for interpreting the report is provided in this user manual.

1.3. Device Classification

Pixyl.Neuro has been classified as a Class IIa Medical Device in accordance with Annex IX, Rule 10. The device has been categorized with a Software Safety Classification Class B, in accordance with IEC 62304:2006+A1:2015. Minor injury or damage to health is possible.

1.4. Technical requirements

An internet connection is required for the online service to work.

Local network/system integration must be initialized and properly functioning before the 3rd party integration solution will work with advice to contact the local systems administrator.

2. Privacy Statement

Pixyl is fully compliant with all aspects of the General Data Protection regulation (GDPR) ensuring the highest standards of privacy and security with respect to personal identifiable information (PII) and patient health records. This document describes data security relevant to the Pixyl.Neuro product.

What data does Pixyl store?

Users: User's first and last name, email address and affiliation (including address and contact number). This information will be used to provide the Pixyl.Neuro service to the user and may from time to time contact her/him to elicit feedback and provide her/him with updates on Pixyl.Neuro. Pixyl will not pass user's details on to any other parties.

Patients: The patients are always sent anonymously to Pixyl's Cloud Platform for analysis. The patient's identification data (identification number, name, birth date..) never leaves the healthcare facility. The anonymization and pseudonymization are done automatically on the healthcare facility's internal server, through the Integration Tool provided by Pixyl.

Note that Pixyl stores anonymous patient images and results of the analysis.

Transfer and Storage of Data

All data is transmitted to Pixyl's servers over a secure https connection. All servers running Pixyl.Neuro are located on Cloud Servers, offering a high level of security, backups and encryption of the data. More information can be provided upon request.

Who has Access to Data?

Pixyl.Neuro is strictly governed by user access controls to ensure only those users with permission to see patient information have access to see it.

Pixyl employees providing system software support will only access the system in the event of a problem. The system administrator who manages the Pixyl.Neuro deployment has had training in data privacy.

Policies and Procedures

All data received will be managed in accordance with Pixyl's Policies and Procedures which are fully conversant with GDPR.

3. Getting Started

3.1. Before beginning

Before attempting to work with this medical device, make sure that this manual and any Release Notes associated with the software have been thoroughly read and fully understood.

3.2. How to register for a Pixyl.Neuro Account

Please contact the Customer Liaison Team at Pixyl to register for an account. Pixyl then provides full support for the account management, onsite installation of the additional Integration Tool, settings and start-up assistance.

3.3. Using Pixyl analysis

After complete installation and configuration onsite, the end user only interacts with the DICOM image viewer with 2 simple actions:

- Select the images;
- Request Pixyl analysis.

Note: this operation may vary from one system to another.

Then the results automatically arrive in the patient's record in the DICOM image management system a few minutes later without any other action.

3.4. Available analysis

A user can be allocated access to up to three types of analysis. Each one of them corresponds to a different module in the product. A summary of these is provided in Figure 1.

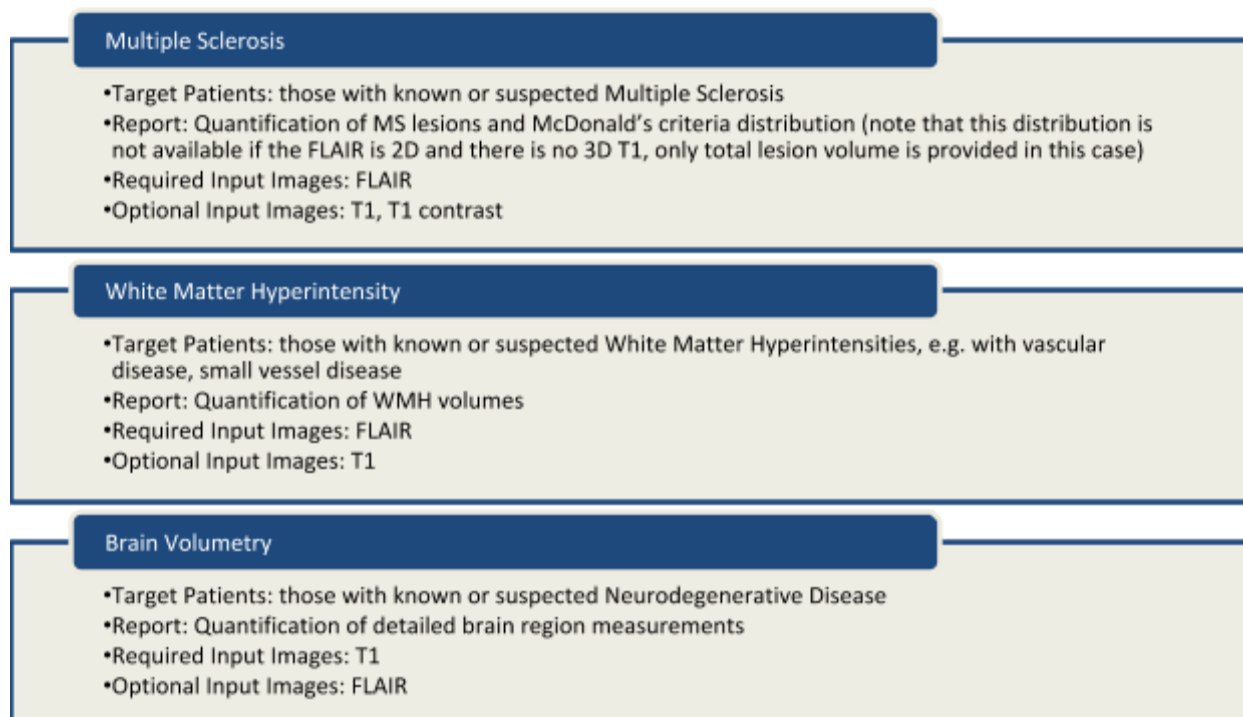


Figure 1: Analysis options available.

3.5. Results

Two different results are provided by Pixyl's analysis.

3.5.1. Pdf report

The pdf report contains quantitative analysis of the brain lesions and/or volumetry. It is composed of several sections (described below), which differ depending on the analysis type, and may include a selection of screenshots to illustrate the results.

In the case of a longitudinal analysis, the pdf report also contains change values in order to provide an overview of the evolution of the patient's condition.

When used in a fully integrated workflow, via Pixyl's Integration Tool, the pdf report is converted to a DICOM format before being inserted in the image management system.

3.5.2. Segmented DICOM images

The segmented DICOM is available for the Multiple Sclerosis and White Matter Hyperintensity analysis only. It is based on the FLAIR images, in which the lesions have been contoured with colored dash lines.

4. Interpreting the Analysis Reports

4.1. Common Report Sections

Patient Information

Available in report: All

This section of the report contains personal information of the patient.

Name: Patient's name.

This field is left blank if the patient is anonymized.

ID: Patient ID.

Used to uniquely identify a patient within a project. In the case of a fully integrated workflow, via Pixyl's Integration Tool, a UUID pseudonym is used in place of the patient's ID.

Gender: Patient's gender.

Birth Year: Patient's year of birth.

Visit date: Date on which the current visit was acquired, in a format adapted to the selected language.

Prior visit date: If a prior visit is available, the report indicates its date.

Quality Control

Available in report: All

This section of the report contains a basic Quality Control of the current visit images and a comparison with prior visit images if available.

Status: Pass, Advisory or Fail.

Observations: Details of the Quality Control analysis.

Note: in all cases the analysis will be performed, but interpretation needs caution when the Quality Control results failed.

4.2. Multiple Sclerosis Report

Pixyl.Neuro Multiple Sclerosis analysis provides segmentation of multiple sclerosis lesions. This can be used to support the diagnosis, prognosis and follow-up of MS subjects.

Image Quality Requirements

The following requirements apply to input sequences for best segmentation results:

Sequence	Optimal Resolution (mm)	Minimum Resolution (mm)
FLAIR	1x1x1	1x1x3
T1W (optional)	1x1x1	1.2x1.2x1.2
T1 contrast (optional)	1x1x1	1.2x1.2x1.2

Images shall be acquired in AC-PC.

Lesion Segmentation

MS lesions are segmented on FLAIR images. Lesions on FLAIR sequences are labeled regarding their region of interest (ROI), to fulfill MS MRI criteria for diagnosis and follow-up:

- Periventricular
- Cortico-juxtacortical
- Infratentorial
- Deep white matter

For each ROI, lesions are counted, and their overall volume is computed.



Lesions less than 10 mm³ in size are automatically removed from the results as they are not considered relevant.

Longitudinal Analysis

When you upload an additional exam to a patient, longitudinal analysis is performed with the previous exam. If you insert an exam between two existing exams (based on the exam date), then visits are reordered, and longitudinal analysis is performed against previous and following exams.

Longitudinal analysis computes new and enlarging (a threshold of 50% is applied to consider a lesion as enlarging) FLAIR lesions, regarding their region of interest:

- Periventricular
- Cortico-juxtacortical
- Infratentorial
- Deep white matter

To enable consistent comparison between exams, sequence quality must be similar. The following constraints apply on all sequences:

- Voxel size should not differ by more than 0.02mm;

- Contrast should not differ by more than 5% (mean and standard deviation).

Where possible, it is suggested that the same scanner, coil and sequences are used for each visit to give the most accurate results.

In the case these constraints are not fulfilled, a warning will be displayed in the interface.

Disease Activity

Available in report: Multiple Sclerosis

This section of the report contains a summary of the disease activity. It is based on the evolution of the number of lesions since the previous visit (Lesion Count). The section is empty if there is no prior visit unless a T1 with contrast image is available, in which case the **T1 with contrast** value will be shown.

T2 FLAIR New: Number of new lesions since the previous visit.

T2 FLAIR Enlarging: Number of enlarging lesions since the previous visit.

T1 with contrast: Number of contrast-enhanced lesions that overlap T2 FLAIR hyperintensities. Only displayed if the modality is available.

Lesion load

Available in report: Multiple Sclerosis

This section of the report contains a summary of the MS specific White Matter Hyperintensities measured on T2 FLAIR images in different anatomical regions of the brain – **Periventricular, Juxtacortical, Infratentorial, Deep WM** (WM stands for White Matter) – and their sum, which is presented under the **Whole Brain** label.

Volume(ml): Volume of lesions measured in the anatomical region, in milliliters (ml).

Change(ml): Additional volume of lesions measured in the anatomical region since the previous visit, in milliliters (ml).
Blank if no prior visit.

Lesion count: Number of lesions identified in the anatomical region.
The lesion count is based on the 2017 revision of the McDonald criteria and is presented with [0 to 8] or “≥ 9” for the whole brain, and “0” or “≥ 1” for the other anatomical regions. Note that the Barkhof MRI criteria for MS diagnosis includes at least 9 lesions on T2-weighted images.

4.3. White Matter Hyperintensities Report

Pixyl.Neuro White Matter Hyperintensity analysis provides segmentation of white matter hyperintensities lesions. This can be used for the diagnosis, prognosis and follow up of subjects with various pathologies including small vessel disease, vascular dementia, etc.

Requirements

The following requirements apply for best segmentation results:

Sequence	Optimal Resolution (mm)	Minimum Resolution (mm)
FLAIR	1x1x1	1x1x3
T1W (optional)	1x1x1	1.2x1.2x1.2

Images shall be acquired in AC-PC.

Lesion Segmentation

WMH lesions are segmented on the FLAIR. The overall lesion volume is provided.

Longitudinal Analysis

Longitudinal analysis consists of comparing the lesion volume between two timepoints.

White Matter Hyperintensity

Available in report: White Matter Hyperintensity

This section of the report contains a summary of the White Matter Hyperintensities measured on T2 FLAIR images in the whole brain.

Total Volume(ml): Volume of T2 FLAIR White Matter Hyperintensities, in milliliters (ml).

Change(ml): Volume change since the previous visit, in milliliters (ml).
Blank if no prior visit.

4.4. Brain Volumetry Report

Pixyl.Neuro Brain Volumetry analysis provides segmentation of brain regions. This can be used for the diagnosis, prognosis and follow up of subjects with various neuro degenerative pathologies.

Requirements

The following requirements apply for best segmentation results:

Sequence	Optimal Resolution (mm)	Minimum Resolution (mm)
T1W (3D, e.g. MPRAGE)	1x1x1	1.2x1.2x1.2
FLAIR (optional)	1x1x1	1x1x3

Images shall be acquired in AC-PC.

Regional Segmentation

Brain regions are segmented on the T1W image.

Longitudinal Analysis

Longitudinal analysis consists of comparing the regional volumes between two timepoints.

Segmentation and Comparison with Normal Values

Available in report: Brain Volumetry

This section of the report contains the Brain Volumetry analysis.

Volume(ml): Volume of the anatomical region, in milliliters (ml).

Change(ml): Volume change of the anatomical region since the previous visit, in milliliters (ml).
Blank if no prior visit.

% of ICC: Percentage of the anatomical region volume compared to Intra Cranial Cavity volume.

Change(%): Percentage change of the anatomical region volume compared to the ICC volume.
Blank if no prior visit.

Normative percentile: Percentile compared to age matched normal population.
Normative percentile is computed if the patient is between 18 and 90 years old.

Change: Percentile change since the previous visit.
Blank if no prior visit.

5. Interpreting the segmented DICOM image

Three different colors are used in Pixyl's segmented DICOM image:

- **Red**, outlines the **new** lesions in a longitudinal analysis;
- **Yellow**, outlines the **enlarging** lesions in a longitudinal analysis;
- **Blue**, outlines **all** the lesions in a cross-sectional analysis, and the **stable** lesions in a longitudinal analysis.



Figure 2: Example of a slice with stable, enlarging and new lesions.

6. Further Help

If you did not find what you were looking for in this document and still require assistance, we will be happy to help. You can contact us by completing the form on the **Contact Us** page on the website, through the email addresses given or via the telephone number provided.

Pixyl follows device regulatory procedures to ensure that Pixyl.Neuro is correctly managed. All emails or online query submissions are internally monitored through a quality system and documented procedures followed to ensure any device problems that have been reported are effectively dealt with.

An email address for support is also available for any return concerning the product specifically: support@pixyl.ai.

Follow us

in Pixyl Medical
@pixylmedical

Contact us

5 Avenue du Grand Sablon
38700 La Tronche, France
+33 (0) 9 72 63 30 68
contact@pixyl.ai

Visit

www.pixyl.ai